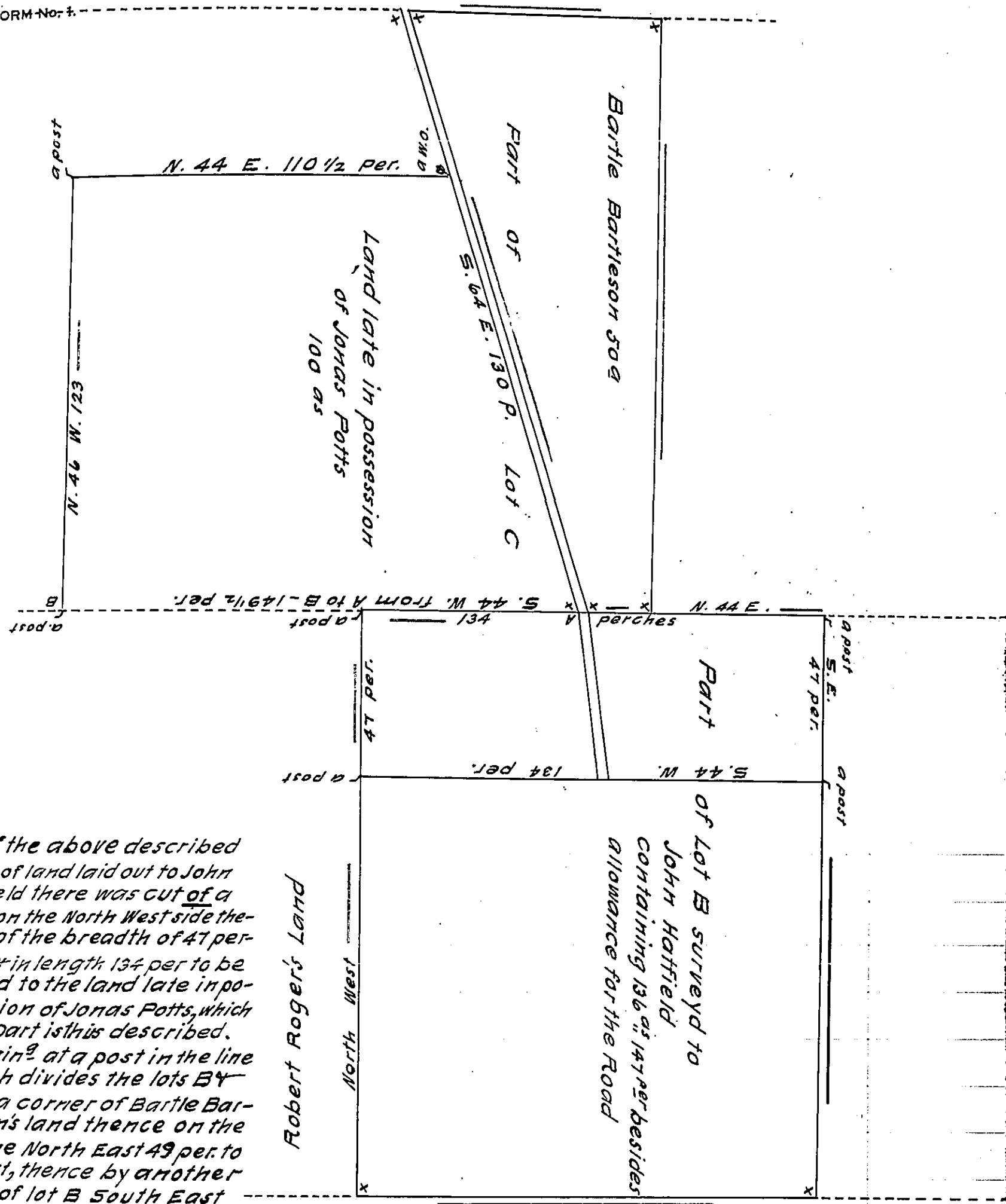


FORM No. 1



Of the above described tract of land laid out to John Hatfield there was cut of a part on the North West side thereof of the breadth of 47 perches & in length 134 per to be added to the land late in possession of Jonas Potts, which said part is thus described.

Begin^d at a post in the line which divides the lots B & C at a corner of Bartle Bartleson's land thence on the sd line North East 49 per. to a post, thence by another part of lot B South East 47 per to a post, thence by a line of marked trees South West 134 per. to a post in a line of Robert Rogers's land thence by the same North West 47 per. to a post in a line of land late in possession of Jonas Potts thence by the same & by the said Bartleson's land North East 85 perches to the place of beginning containing 38 1/2 acres besides allowance for the road passing thro the same. Surveyd the 4th of 9 ber 1735

J. Benja Eastburn

IN TESTIMONY that the above is a copy of the original remaining on file in the Department of Internal Affairs of Pennsylvania, made conformably to an Act of Assembly approved the 16th day of February, 1833, I have hereunto set my Hand and caused the Seal of said Department to be affixed at Harrisburg, this sixth day of October 1910

Nancy Howell
Secretary of Internal Affairs.